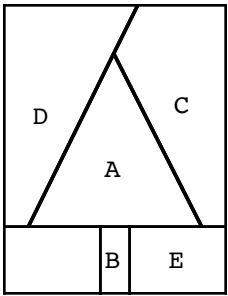


Winter Tree.  
7 inches wide by 9 inches high



A variation on a design  
by Gigi's Thimble & Jedi  
Craft Girl  
\*\*See [Gigisthimbler.com](http://Gigisthimbler.com)  
for the original "Rustic  
Pines" quilt\*\*

Winter Tree Quilt  
Strip-pieced variation of my  
Christmas Tree Block

More info  
found at  
[OPQuilt.com](http://OPQuilt.com)

Tree  
Cut 1, from  
strip-pieced  
fabric

A



Tree  
Trunk

B

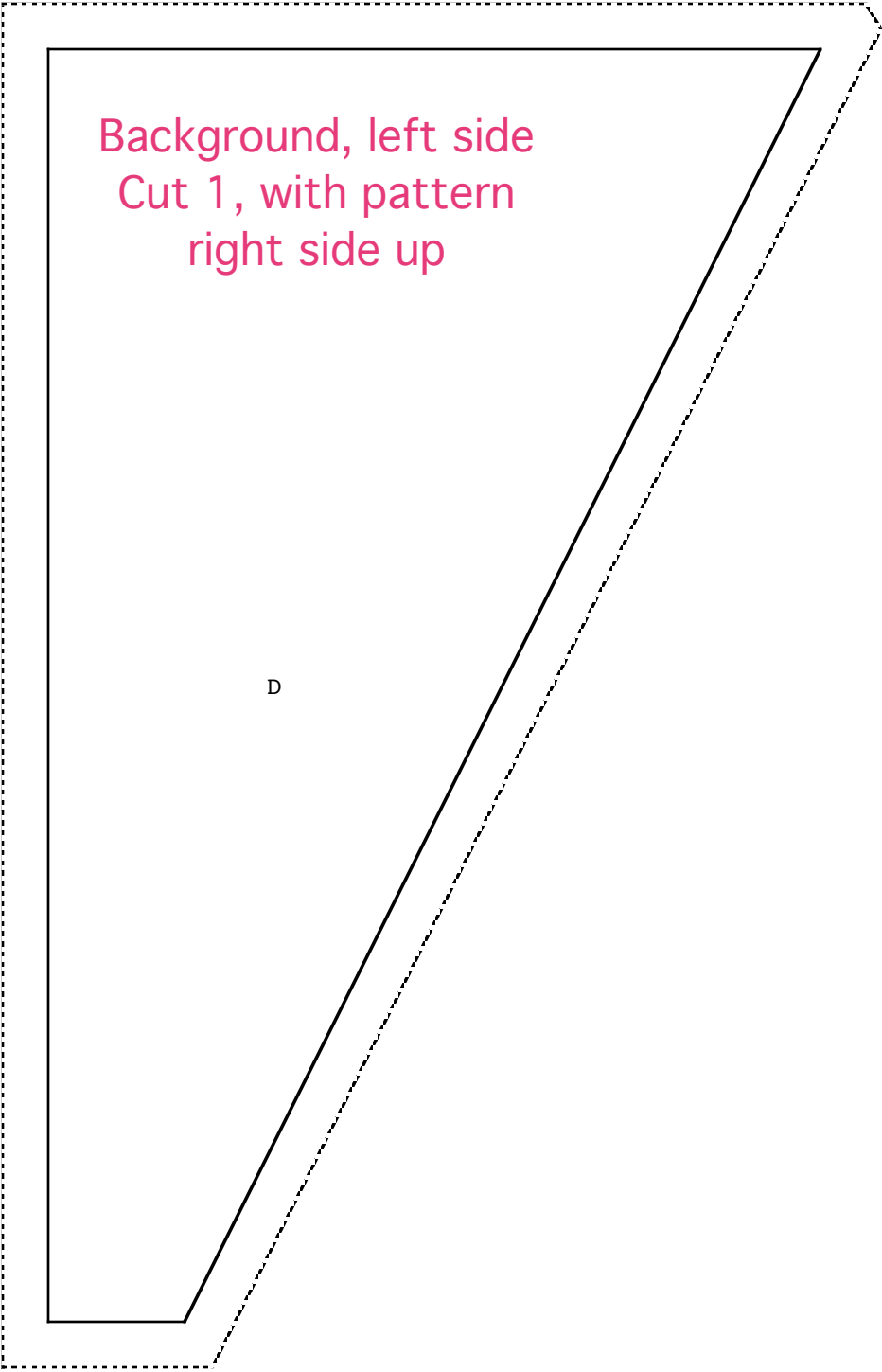
Cut 1

Background, right side  
Cut 1, with pattern  
right side up

C

Background, left side  
Cut 1, with pattern  
right side up

D



Tree  
Background

E

Cut 2